



NEEDLE VALVES, TYPE ZWZ11

APPLICATION AREA:

The needle valves are used in measuring systems of level gauges, flow meters and other industrial automatic applications.

For instance, they can be used to disconnect the measuring circuit right at the tank where fluid level is measured inside or cutoff the measuring tube.

DESIGN:

All parts of the needle valve are made of carbon steel, except for the needle and the stem, where stainless steel is used. The valve body is welded to the valve bonnet. On case acid resistant valves those parts that likely come into contact with the flowing utilities are made of stainless steel, except for the needle that is in quenched stainless steel.

With regard to steel bodies, the valve seats are surfaced with use of acid resistant electrodes. The parts that are exposed to the risk of corrosion are protected by appropriate coatings. Ball endings of valves and connecting stubs are suitable for welding to pressurized pipes $\varnothing 12 \times 2$ mm. The ergonomic handwheel are die pressed from steel sheets, which facilitates valve operation.



TECHNICAL PARAMETERS:

Working temperature: -10...300 [°C] - for the steel body,
-196...400 [°C] - for the acid resistant body,

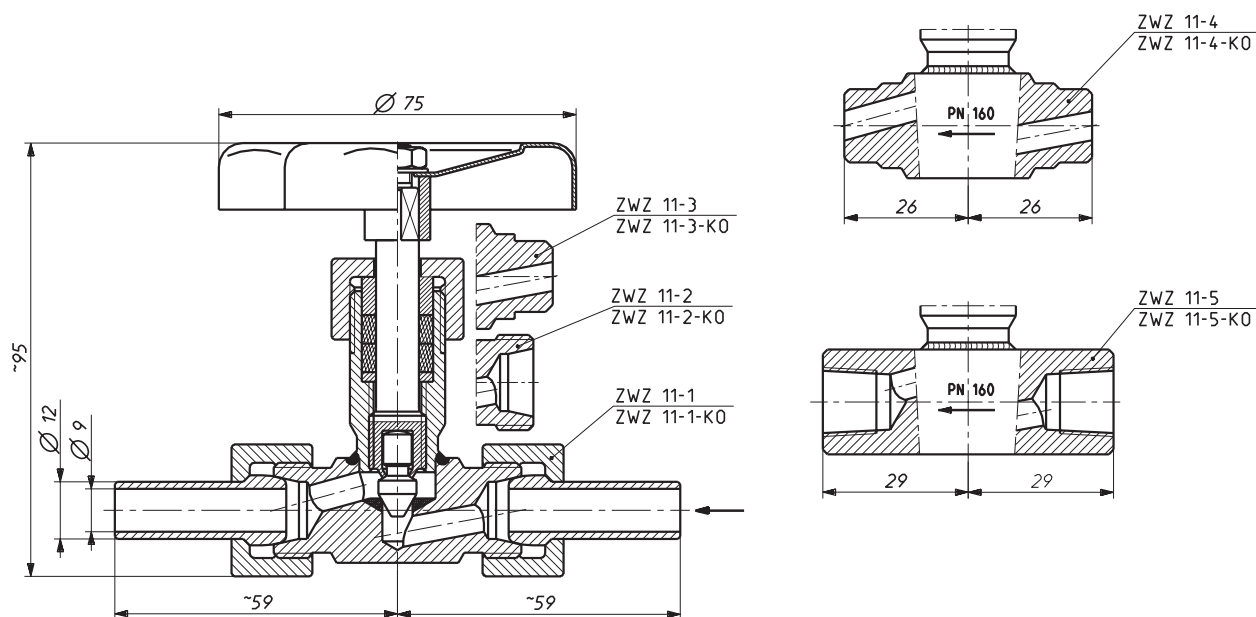
Port diameter: 6 [mm]

Weight: 0,4 [kg]

Working pressure values

Nominal pressure [bar]	Temperature of fluids [°C]				
	200	250	300	350	400
160	Maximum working pressure [bar]				
	160	140	125	112	100

37-700 Przemyśl, 23 Obozowa St.
tel. +48 16 678 66 01, fax +48 16 678 65 24
marketing@polna.com.pl, www.polna.com.pl



Design and dimensions of the valve

Design options for the needle valve

Material for the valve body	Valve type (product code)	Type of connecting nozzles	
		Inlet	Outlet
Carbon steel	ZWZ 11-1	with a ball ending and a nut	with a ball ending and a nut
	ZWZ 11-2	for a ball ending	
	ZWZ 11-3	for welding	
	ZWZ 11-4	for welding	for welding
	ZWZ 11-5	with internal thread NPT 1/4"	with internal thread NPT 1/4"
Stainless steel	ZWZ 11-1-KO	with a ball ending and a nut	with a ball ending and a nut
	ZWZ 11-2-KO	for a ball ending	
	ZWZ 11-3-KO	for welding	
	ZWZ 11-4-KO	for welding	for welding
	ZWZ 11-5-KO	with internal thread NPT 1/4"	with internal thread NPT 1/4"

ORDER PLACEMENT:

Orders must contain full name of the valve and its product code, e.g. needle valve **ZWZ 11 - 1 - KO**